



# Summer Hill


ESTATES

*Where we call home*



Corporate Profile

---

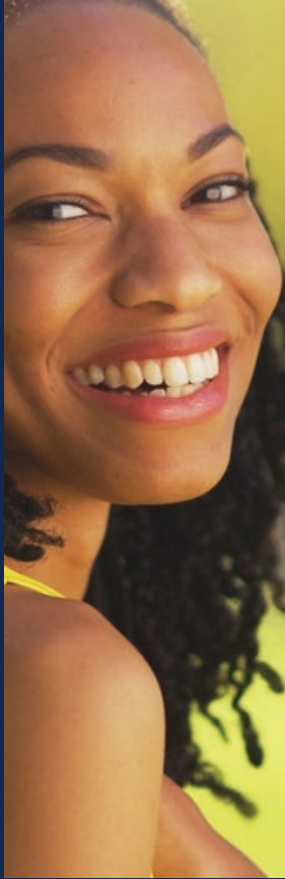


Over 54 plush apartments of two and three bedrooms located at suitable places at affordable prices.



## About us

Summerhill Estates is a real estate company incorporated and legally registered under the Nananom Group of companies which started its operations in 2015. With the aim of being the leading Real Estate Company in Ghana and beyond, Summerhill has to its credit over 54 plush apartments of two and three bedrooms located at suitable places at affordable prices. We signify an energetic contemporary future in real estates services.



## Our Core Values

Providing clients with the required satisfaction.

Our results speaks for themselves because satisfying our clients is our major priority. Thus, we have houses and lands that are litigation free and meet client taste and preference.



# Integrity

Our repeated referrals demonstrate the dedication we show to our clients. We at Summerhill believe to have a great customer relationship, there must be trust hence we work strongly towards giving exactly or exceed our promises.



# Excellent customer service

At Summerhill, you are number one. We provide you with the individual attention and service you deserve. We also provide insightful advice, listen and attend to our clients every need during and after business has been finalised.

# Vision

We want to connect with people from all walks of life and to be the only solution when real estate comes to mind by serving as a yardstick of excellence in the Real Estate industry.





**Mission** Our firm seeks to be the leading name in the industry by providing high quality but affordable housing to clients. We have your comfort at heart.



# Our services

## 01 LEASING AND MORTGAGE

---

Summerhill has laid down special measures with excellent financial institutions to help clients workout the provided flexible conditions for your preference

## 02 SELLING OF LUXURIOUS APARTMENTS

---

Appreciate your personal apartment by purchasing any of our state of the art furnished and unfurnished apartments in plush areas suitable for your taste

## 03 PROPERTY RENTING

Summerhill have fully furnished apartments that cover clients who need short term accommodation thus, at most six months stay at our exquisite East Legon hills

## 04 SELLING OF PREMIUM LANDS

Don't be discouraged, we have a wide range of lands available at serene locations and at very affordable prices. Whatever your choice is, we are ready to provide











# Why us

## Premium quality

Your safety is our concern, that is why we conduct intense research and surveys on the lands and the area as well as a study on the weather conditions which help in material selection suitable for building. Hence our buildings are able to withstand any weather condition.



# Why us

## Professional support

We are your professional partners in real estates. Thus, we enlighten our clients on relevant information and ensure continuity of business.



# Why us

## Regular updates

We always keep our clients updated with ceaseless information on maintenance and new developments (if any) during and after doing any business with them.





# Why us Expertise

We believe in uniqueness and the ability to offer a complete real estate service to our clients hence we involve a great blend of experienced young and old minds who design and build rare apartments which are top notch.



























# THE GEORGE™



## PRICE

### INVESTMENT HIGHLIGHTS

AVERAGE RENTAL (YRLY): USD 21,000 – USD 54,000

RENTAL YEILD (ANNUAL) 12%-17%

---

PROPERTY APPRECIATION (YRLY): 10%-15%

Each unit is fitted with the following: sanitary wares and bathroom furniture, kitchen units with appliances (microwave, refrigerator, extractor, oven, washing machine, and wardrobe. The George provides tenants with top notch amenities and services which include: - spacious car park, Backup Utilities (Water/Generator/internet), Children playground, Swimming pool etc. for your benefit.


#### Investment Advantages

- Spacious and very comfortable units
- Secure Neighborhood
- Very good location
- High Annual ROI as compared to market



## PAYMENT PLANS

MORTGAGE	STANDARD	FLEXI	DESCRIPTION
20% or 30% down payment	30% down payment	25% down payment	3 BEDROOM (TYPE A)
20% or 30% down payment	30% down payment	25% down payment	3 BEDROOM (TYPE B)
The remainder in mortgage	30% in three (3) months	25% every 3 months till completion	4 BEDROOM
	20% in six (6) months		5 BEDROOM
	20% on completion		



NO. OF UNITS	AREA (m2)	PRICE (USD)	MONTHLY RENTAL	PROPERTY APPRECIATION	RENTAL YIELD (%)
3	245.35	300,000	1,200-1,500 <sup>8</sup>	-121	3-15
5	295.9	350,000	1,800-2000	8-12	11-13
4	381.99	400,000	3,500-4,500	8-12	13-14
5	440.00	550,000	4,500-4,800	8-12	12-13





# 3 Bedroom



4 Bedroom





5 Bedroom



# Layout Plan

**Address:**

Summerhill Estates, East Legon Hills, Accra-Ghana.

**Contact Details:**

+233-50 839 9356 | +233-55 253 1100

**Email:**

[info@summerhillestate.com](mailto:info@summerhillestate.com)

**Working Hours:**

Mon-Sun 6:00am to 11:00pm